



Dear Dover Park Family

I am delighted to share some exciting updates from Dover Park Primary this week. Our pupils continue to impress me with their enthusiasm and commitment to learning.

### Celebration Assemblies

On Friday, we held our first celebration assembly, and I want to take a moment to explain the various achievements we recognize each week. Our assemblies are designed to celebrate multiple aspects of school life and I thought it would be useful to explain these in a little more detail:

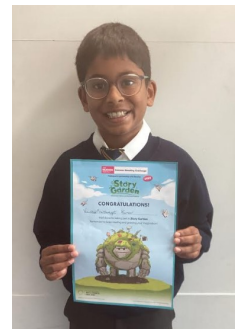
### **Readers of the week:**

We celebrate a reader of the week from each class to recognise children who show a love of reading, make great progress, or put extra effort into their reading habits (at home or in school). Reading is a key skill that supports learning in every subject and celebrating our readers helps to build confidence, motivation, and a lifelong enjoyment of books. We encourage all parents to read regularly at home with their children, as it will help to develop their reading fluency and comprehension, their vocabulary and their understanding of the World around them.



**Achievements from home:** we warmly encourage parents to send in certificates or awards from external events

We celebrate children's achievements from home to show that learning and personal growth happen everywhere—not just in school. Whether it's learning a new skill at home, taking part in a club or activity or receiving an award, these moments deserve recognition. Celebrating home achievements helps build confidence, strengthens the link between school and home, and encourages children to take pride in all that they do. This week, we celebrated Vaishnav completing the summer reading challenge.



### **The class with the highest attendance:**

Consistent attendance is one of the strongest predictors of high achievement. Pupils who attend school regularly are more likely to keep up with their learning, stay engaged, and perform well in assessments. Just as importantly, school provides structure, social connection, and support—all of which are crucial for positive mental health and wellbeing. As such, each week, we celebrate the class with the highest attendance and they have the chance to spin the attendance wheel to choose a 10 minute activity.



### **The class with the neatest cloakroom:**

We celebrate the class with the neatest classroom to recognise the effort and pride pupils take in caring for their learning environment. A tidy classroom helps everyone feel calm, focused, and ready to learn. It also shows great teamwork, as keeping the space clean and organised is something the whole class works together to achieve.

This week, the attendance award was won by year 6 and the cloakroom award was won by year 1.

### **Behaviour and achievement Points:**

We celebrate the house that earns the most behaviour and achievement points to recognise positive choices, kindness, teamwork and hard work. They reflect how pupils show respect, responsibility, resilience and how they challenge themselves in class to improve socially and academically. By working together as a house, children learn that their actions contribute to a bigger goal—and that positive behaviour is something to be proud of. The house captains give a motivational speech to their teams each week and the points are accumulated for a house activity at the end of the year. Previously, the winning houses have had cinema trips or visits to the soft play at Aspire.

### **Hot Chocolate Friday:**

Pupils who have demonstrated exceptional behaviour for learning throughout the week, are rewarded with a special Hot Chocolate Friday afternoon with me. This allows us to celebrate children who always work hard or who have made significant improvements in their focus and attitude. In the summer we offer milkshakes instead of hot chocolate and we often have a mini office disco!



## Times Table Rockstars and Numbots

Children from reception through to year 6 have TT Rockstar or Numbots accounts. Both of these programs help children to develop their mathematical fluency by focusing on number facts and timestables, which are key to success in maths. Each week, Mr Rowson joins our celebration assembly and awards children with certificates (or badges) for attainment and progress in both problems. A daily short focused session on TT Rockstars or Numbots each day will help build children's mathematical fluency.



## Swimming

As we are based on an island, we believe it is really important to help all children in school to be able to swim. Children in years 3 and 6 therefore have swimming lessons as part of their curriculum. Year 3 have recently commenced their swimming lessons at Waterside Pool, which provides an excellent opportunity for physical development and water safety skills. This is always an important milestone in our pupils' educational journey.



# LEARNING

Reception class are settling into their new routines. This week they were introduced to Dough Disco. A fun way to build hand and arm strength to support pencil grip and control. The class squeezed, prodded, rolled and pinched the dough along to music.



This week Year 1 have been exploring maps and went around the school to see features we could find. When we came back we used Google Earth to look at our school from a birds eye view and the same features we found in the school grounds - the children loved using Google Earth!



Children in Year 2 drew maps of the Isle of Wight to show what we already know about the geography of where they live. They know lots of places around the island including landmarks, towns and physical features like woods and beaches. By the end of this term they will know even more places and be even better at placing them on a map.



# LEARNING

This week the children in Year 3 were looking at the nutritional value of different food and drink products. The children were really engaged in this activity, with a lot of rich conversation around what healthy looks like.



Year 4 had a great music lesson learning the note B and playing a few songs.



Year 5 have loved learning about artist, Peter Thorpe, as we dive into all things 'space'. Ask them what makes his work so unique, they will have lots to share with you about him!

Year 6 have made a fantastic start in Science this week. They have started to study how light behaves and jumped straight in with an investigation. Year 6 had to design an activity to prove that light travels in straight lines.



## Hot Chocolate Friday

Reception— Winnie

Year 1— Jasmine

Year 2— Maisie

Year 3— Evie

Year 4— Olivia H

Year 5— Sophia— Rae



## Reader of the Week

Year 1— Cameo

Year 2— Lucy

Year 3— Rose

Year 4— Emerson

Year 5— Oliver

Year 6— Willow



## Cloakroom Award

Year 1

## Attendance Award

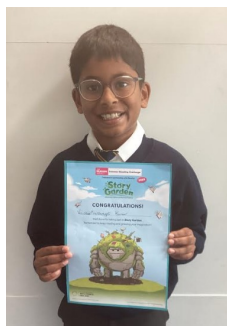
Year 6

## House Captains (Year 6)

Red —Max B

Blue — Gabrielle

Yellow — Freddie



Well done on completing the summer reading challenge Vaishnav



## Diary Dates

- 29th September — Phonics Parent Workshop
- 6th, 7th and 8th October — Parents Evening (booking details will be sent shortly)
- 16th October — School Disco
- 5th November — Year 6 DT Workshop
- 18th November — Year 5 DT Workshop
- 20<sup>th</sup> November — Year 3 Assembly
- 22nd November — Christmas Sing Up at Medina Theatre (children who have attended choir)
- 8th December — Year 1 Art Workshop
- 9th December — PJs and Popcorn Fundraiser
- 11th December — Christingle Service
- 12th December — Reception Christmas Craft Workshop
- 30th January —Year 3 Music Workshop
- 9th February —Year 4 Art Workshop
- 13<sup>th</sup> February — Year 2 Assembly
- 4th March —Year 6 Music Workshop
- 12th March —Year 2 DT Workshop
- 16th March — Year 4 Music Workshop
- 18th March —Year 5 Assembly
- 20th March — Easter Egg donation — Dress Down Day
- 26th March — Year 1 Assembly
- 27th March —Easter Egg Tombola
- 4th May —Year 5 Music Workshop
- 14<sup>th</sup> May — Year 4 Assembly
- 20<sup>th</sup> May — Year 1 Music Workshop
- 21st May — School Disco
- 29nd May — Reception Music Workshop
- 5th June — Year 3 Parent Workshop
- 19th June— Whole School Teddy Bear Picnic 12:15-1:00
- 25th June — Year 2 Music Workshop
- 2nd July — Reception Assembly

## 2025/26 Webinar Schedule (Autumn Term)

<u>Navigating Neurodivergence</u>	<u>Breakthrough Behaviour</u>	<u>Feel without Fear</u>	<u>Re-establishing Routines</u>	<u>CPVA</u> (Child to Parent Violence and Aggression)	<u>Sleep</u>	<u>Accepting Adolescence</u>	<u>Seasonal Sensory Awareness</u>
4th September 9:30am	9th September 9:30am	11th September 9:30am	16th September 9:30am	18th September 9:30am	23rd September 9:30am	25th September 9:30am	
30th September 9:30am	2nd October 9:30am	7th October 9:30am	9th October 9:30am	14th October 9:30am	16th October 9:30am	17th October 9:30am	17th October 11:30am
4th November 9:30am	6th November 9:30am	11th November 9:30am	13th November 9:30am	18th November 9:30am	20th November 9:30am	25th November 9:30am	27th November 9:30am
2nd December 9:30am	4th December 9:30am	9th December 9:30am	11th December 9:30am	16th December 9:30am	18th December 9:30am	19th December 9:30am	19th December 11:30am

Please email [katrina.austin1@iow.gov.uk](mailto:katrina.austin1@iow.gov.uk) to join any of the webinars noted above. All webinars are delivered online via Teams. A link to the webinar will be sent to you 24 hours prior.

Isle of Wight  
**Neurodiversity**  
Team



**Lift  
Ryde**

**Lift Ryde  
Open Evening  
October 8th  
4:00pm - 7:00pm**

Parent Presentations 4:30pm and 5:30pm



**gloji** | Isle of Wight

## Play netball for weight loss

A free 12-week programme at your local sports centre

Complete a specialist digital weight loss programme alongside weekly netball sessions designed to help you reach your fitness goals in a fun, supportive environment.

**Scan me to Sign up!**

**Join our next programme:**

**Date:** Thursday 2nd October, 2025

**Time:** 6-7.30pm

**Location:** Ryde School, PO33 3BE

support@gloji.co.uk 0800 054 1190 www.iow.gloji.org.uk

## Place Talk summer 2025

Plan For Neighbourhoods - Help Shape Ryde

Thriving Places	Taking Back Control	Stronger Community
<ul style="list-style-type: none"> <li>Highstreet improvements</li> <li>Public &amp; active transport</li> <li>Community healthcare services</li> <li>Schools in your community</li> <li>Public services</li> <li>Community-led demand in town centres</li> </ul>	<ul style="list-style-type: none"> <li>Local jobs, local skills</li> <li>Championing innovation</li> <li>Supporting local entrepreneurs</li> <li>Community decision making</li> <li>Breaking cycles of unemployment</li> </ul>	<ul style="list-style-type: none"> <li>Tackling loneliness and isolation</li> <li>Disconnected from neighbours</li> <li>Investing in demand-led public spaces</li> <li>Challenging social division</li> <li>Strong sense of local pride and belonging</li> <li>Community resilience</li> </ul>

Ryde Neighbourhood Board

Scan the QR code to take part in our public consultation.

## Suicide First Aid

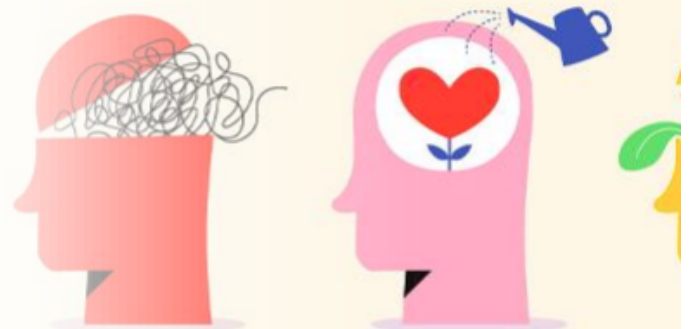
This FREE full day course provides learners with the foundational knowledge and practical skills needed to effectively intervene in situations where someone may be contemplating suicide.

Designed for individuals across various professions and community roles, this programme equips learners with the tools to recognise the signs of suicide, initiate life-saving conversations, and connect at-risk individuals with appropriate resources.

Whether you're a healthcare professional, educator, HR personnel, or concerned community member, this programme empowers you to make a real difference

**30<sup>th</sup> September 2025 09:30am–4.30pm at The Learning Centre, Westridge, Brading Road, Ryde, Isle of Wight, PO33 1QS**

Isle of Wight Council employees should book via the [course page](#) on the Learning Hub. External delegates can see more information [here](#) and book by completing the [online application form](#)





# Drop-in Sessions

For parents of Early years children with emerging



## SEND

Please scan the QR code for more information and to book

Come and join us for a friendly and informal drop in session, designed to provide support, advice, and a chance to connect with other parents and carers.

We often have Occupational Therapists and Speech and Language Therapists available to offer specialist advice.

**10<sup>th</sup> September- Newport Family Centre**

**17<sup>th</sup> October- Sandown Family Centre**

**7<sup>th</sup> November- Ryde Family Centre**

**9<sup>th</sup> December- Newport Family Centre**

***9.30am - 10.30am or***

***10.30am - 11.30am***



Isle of Wight  
Council

**NHS**  
Hampshire and  
Isle of Wight Healthcare  
NHS Foundation Trust



StoneCrabs  
Theatre

**FREE!**

**RYDE LIBRARY  
8-12 YEAR OLDS**

**WEDNESDAYS, 5-6:30PM**

**STARTS 24 SEPTEMBER**



**OFF BOOK**

**DRAMA GROUP**



**PLEASE  
DON'T PARK**

**ON DOUBLE  
YELLOW LINES**